

# Testing Information for Parents

Please type your name and your child's name in the chat. We will be giving out prizes throughout the session.



# FSA Overview



# 3rd -5th FSA

- Multiple choice, Multiple response, Table match, selectable text items, and grid responses for math
- Approximately 60 questions per test
- Timed (80 mins. each day)
- Over two days for the ELA and Math FSAs
- Grades 4-5: Includes a Writing Essay portion for 120 minutes
- Grade 5 only: SSA Science Assessment over two days



# Achievement Levels

| Level 2                                                                                                                        | Level 3                                                                                                                  | Level 4                                                                                                                         | Level 5                                                                                             |
|--------------------------------------------------------------------------------------------------------------------------------|--------------------------------------------------------------------------------------------------------------------------|---------------------------------------------------------------------------------------------------------------------------------|-----------------------------------------------------------------------------------------------------|
| Students at this level demonstrate a below satisfactory level of success with the challenging content of the Florida Standards | Students at this level demonstrate a satisfactory level of success with the challenging content of the Florida Standards | Students at this level demonstrate an above satisfactory level of success with the challenging content of the Florida Standards | Students at this level demonstrate mastery of the most challenging content of the Florida Standards |



# Things to do at home

- Come to school every day and arrive on time
- Encourage your child to do their best
- Make sure your child goes to bed early the night before school
- Eat a nutritious breakfast every morning
- Read at home with your child
- Help them to complete homework



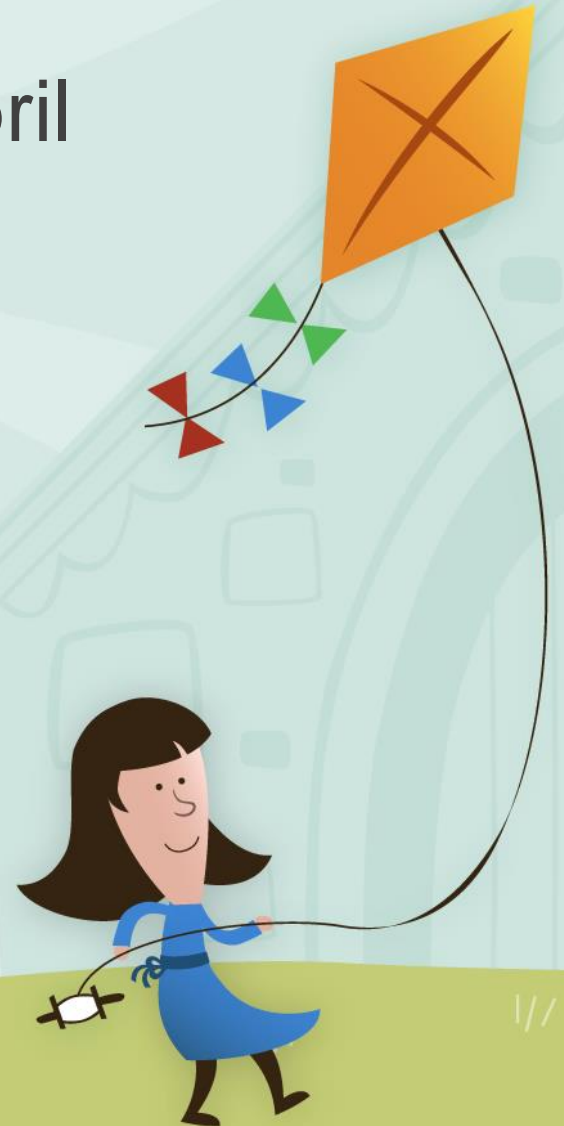
# FSA Reading Assessment

3<sup>rd</sup> Grade on Tuesday and Wednesday, April

5<sup>th</sup> and 6<sup>th</sup>

4<sup>th</sup> Grade/5<sup>th</sup> Grade on Wednesday and

Thursday, May 4<sup>th</sup> and 5<sup>th</sup>



14. What information about Thomas Jefferson is included in both Passage 1 and Passage 2?

- Ⓐ He traveled in many different countries.
- Ⓑ He kept a journal of his experiments with plants.
- Ⓒ He cooked foods that many people had never eaten.
- He planted many different kinds of vegetables in his garden.

## Multiple Choice



8. Which **two** sentences should be included in a summary of Passage 1?

- Ⓐ Jefferson's garden was on a hilltop in Virginia.
- Ⓑ Jefferson cooked most of his food by boiling it.
- Ⓒ Jefferson wrote the Declaration of Independence.
- Ⓓ Jefferson believed plants were important to society.
- Ⓔ Jefferson kept detailed records of the vegetables he grew.

# Multiple Responses





# Part A

# Part B



9. This question has two parts. First, answer Part A. Then, answer Part B.

## Part A

Which sentence gives a point made by the author of Passage 1?

- Ⓐ Jefferson enjoyed cooking.
- Ⓑ Jefferson was a great president.
- Ⓒ Jefferson kept trying when his plants failed.
- Ⓓ Jefferson thought everyone should have a garden.

## Part B

Which sentence from Passage 1 provides evidence for the answer in Part A?

- Ⓐ "After Jefferson retired from public life to his beloved Virginia hilltop plantation, the garden 'served as a sort of this experimental testing lab' . . . ." (paragraph 1)
- Ⓑ ". . . when blossoms appeared, and when the food should come to the table." (paragraph 3)
- Ⓒ ". . . 'The greatest service which can be rendered any country is to add a useful plant to its culture.'" (paragraph 4)
- Ⓓ "'He once also wrote that if he failed 99 times out of 100, that one success was worth the 99 failures' . . . ." (paragraph 6)



**11.** The title of Passage 2 calls Jefferson a “food pioneer.” Fill in the circles **before** the **two** sentences that support this description.

- Ⓐ “In Jefferson’s day, there were no supermarkets, no refrigerators, and no trucks or airplanes to move food quickly over long distances.
- Ⓑ Mostly, people ate only what they or their neighbors grew and made.
- Ⓒ Because of this, most people were familiar only with local plants and were afraid of new ones. ● Perhaps because Jefferson traveled in Europe—and because he always liked to try new things—he was an exception. ● He loved to grow unfamiliar plants.” (paragraph 8)

# Selectable Text



16. Fill in the circles to compare how Passage 1 and Passage 2 present information about Thomas Jefferson.

|                                                                   | Passage 1 | Passage 2 | Both Passages |
|-------------------------------------------------------------------|-----------|-----------|---------------|
| <b>describes the types of plants in Jefferson's garden</b>        | ●         | Ⓐ         | Ⓒ             |
| <b>compares Jefferson's gardening with his other work</b>         | Ⓓ         | ●         | Ⓕ             |
| <b>describes where Jefferson discovered different foods</b>       | Ⓖ         | Ⓗ         | ●             |
| <b>compares food sources in Jefferson's time with modern ones</b> | Ⓙ         | ●         | Ⓛ             |

# Table Match



## FSA ELA Reading Practice Test Answer Key

Read the passage and then answer Numbers 17 through 19. There are three underlined words or phrases in the passage to show which word or phrase may be incorrect.

We squint when the sun is in our eyes because the bright sunlight hurts. This is how our brain protected our eyes. Protection is important during an eclipse. An eclipse happens when the sun, moon, and the object you are viewing.

A solar eclipse happens when the Moon moves between the Sun and the Earth. The Moon blocks our view of the Sun. Viewing the Sun during an eclipse is not an everyday event. But can it be prevented?

The safest and easiest way to view a solar eclipse is through a solar viewing camera. A pinhole camera lets you see what the Sun is doing without looking directly at the Sun. It is a simple device. You turn your back to the Sun and protect your eyes.

17. This is how our brain protected our eyes.

- (A) has protected
- (B) protects
- (C) will protect
- (D) correct as is

# Editing Items



# How are we preparing at school:

- Small group standard-based lessons with students needs as a focus
- Whole group standard-based lessons with students needs as a focus
- FSA Friday practices
- Data chats with students
- Goal setting with individual students
- Celebrations of success
- ELP
- Saturday Academy- Letters have been sent home



# What Can You Do At Home to Help:

- Talk to your child at home about what he/she is learning in school
- Read with your child and discuss what he/she has read
- Ask your child to inform you about certain topics he/she has read about
- Have your child identify parts of the text as they are reading (specific details, main ideas, text features)
- Teach your child new words to enhance his vocabulary

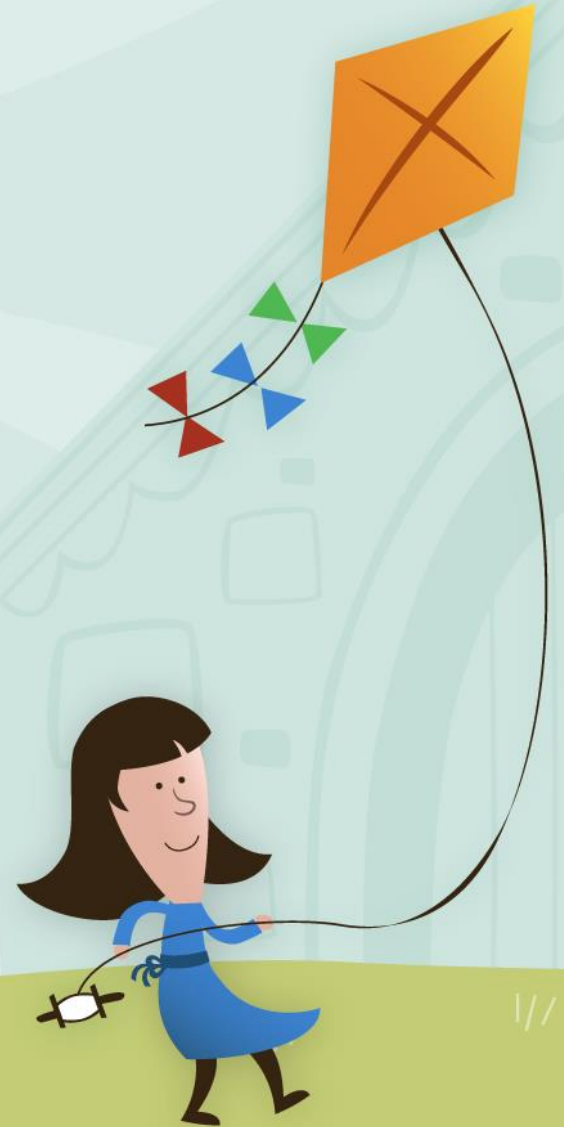


# Resources to use at home

- [Fsassessments.org](https://www.fsassessments.org)
- [Myon.com](https://www.myon.com)
- i-Ready
- Public Library
- At- home book clubs



# Time to Win a Prize

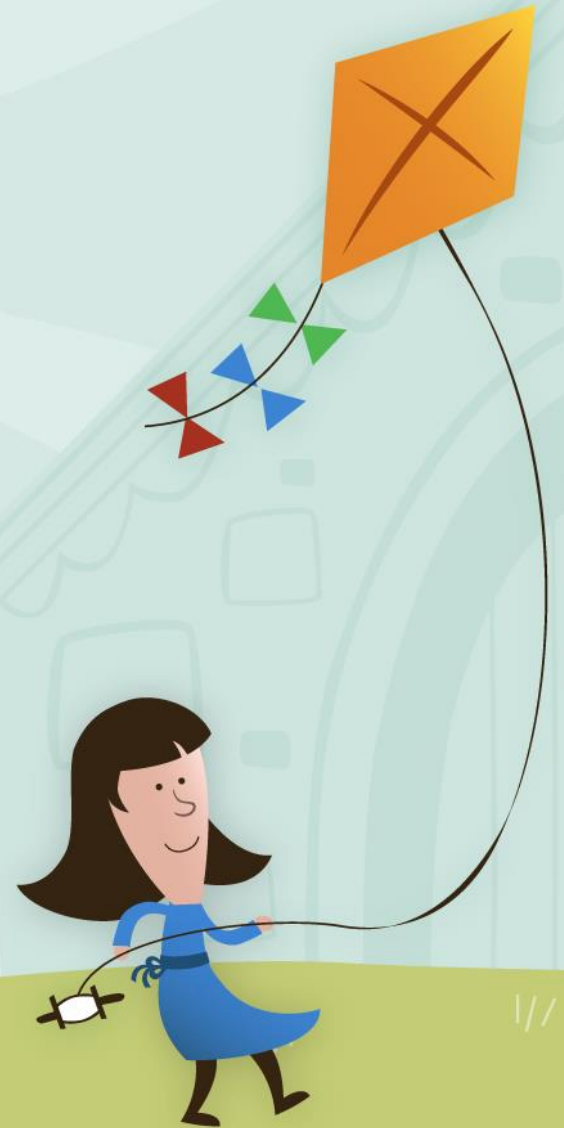




# FSA Writing

## Tuesday, April 5<sup>th</sup>

4<sup>th</sup> and 5<sup>th</sup> Grade



# Types of Modes Tested

- Opinion
- Informative



# Sample Prompts

- Write an essay for your teacher in which you give your opinion about whether students should do activities to improve schools. Use information from the passages in your essay.
- Write an informative essay to present to your class about the problem of light pollution in the United States today. Use information from the passages in your essay.




# Test Specifications

- 800-1,300 words (usually 3 or 4 sources/articles)
- Students are provided a text set with articles, three sheets of lined paper, and a separate planning sheet.
- 120 minutes to complete test, unless your child has extended time for a specific reason (504, IEP, ELL)
- Classroom timers are not allowed, other than a clock and time written on the board.



Many seek ways to live a healthier lifestyle. Write an essay for your family in which you give your opinion about whether your family should eat at restaurants more often or eat meals cooked at home more often. Use information from the passages in your essay.



 TO: Eat at home  
A: family

 B

- Thurs. night 6pm
- work, school
- tummies grow!
- McDonald's
- terrible
- healthy benefits

 M

less calories

- 200 calories (1)
- burgers fries (2)
- super size (1)
- calorie conundrum (1)
- gulp Big Mac (1)
- (3) • 20 min, brain, full
- (1) • eat home, improves lives

 E

- splurge
- special occasion
- not a habit
- eat at home

 H

happiness

- (1) • spirit, mind, body
- (1) • not just fit bod
- (3) • improve relationships
- (1) • cooking w/ Adalyn
- chatting (3)
- lifts spirits (1)
- important (1)

Sources

- 1) Eating Out Costs You 200 Calories
- 2) Eat Right
- 3) Dinner Time!



# How are we preparing at school:

- Giving students practice prompts
- Teaching students how to plan their writing (an important step in the writing process that sets their writing up for success)
- We use a BMME structure for writing essays (beginning, middle, middle, end)
- Giving students articles to read and respond to
- Providing feedback to students through independent conferencing
- Goal setting with celebrations
- Writing Wizards Writing Camps
- Saturday Academy



# What Can You Do At Home to Help:

- Talk to your child at home about what he/she is learning in school
- Ask your child his or her opinion about certain topics and what his two main reasons are to support his opinion (this can help students with forming middle main idea sections)
- Read with your child and discuss what he/she has read
- Ask your child to inform you about certain topics he/she has read about
- Have your child identify craft as they are reading (specific details, sensory details, sentence variety, vivid verbs, fabulous beginnings or endings)
- Teach your child new words to enhance his vocabulary
- Help your child edit his/her writing



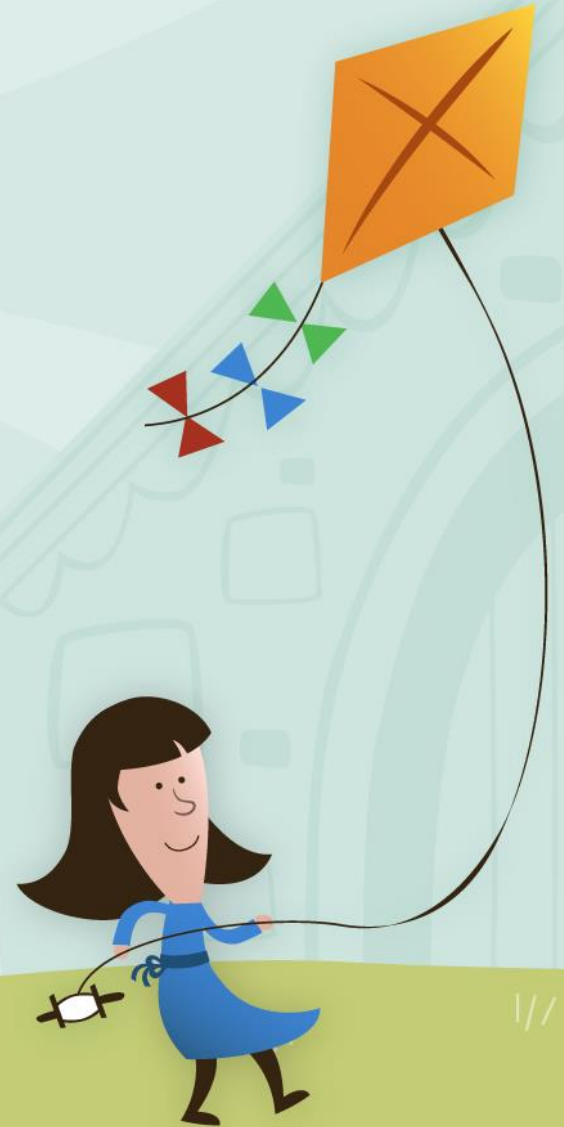
# Resources to use at home

- [Fsassessments.org](https://www.fsassessments.org)
- [Myon.com](https://www.myon.com)
- Newsela
- Commonlit





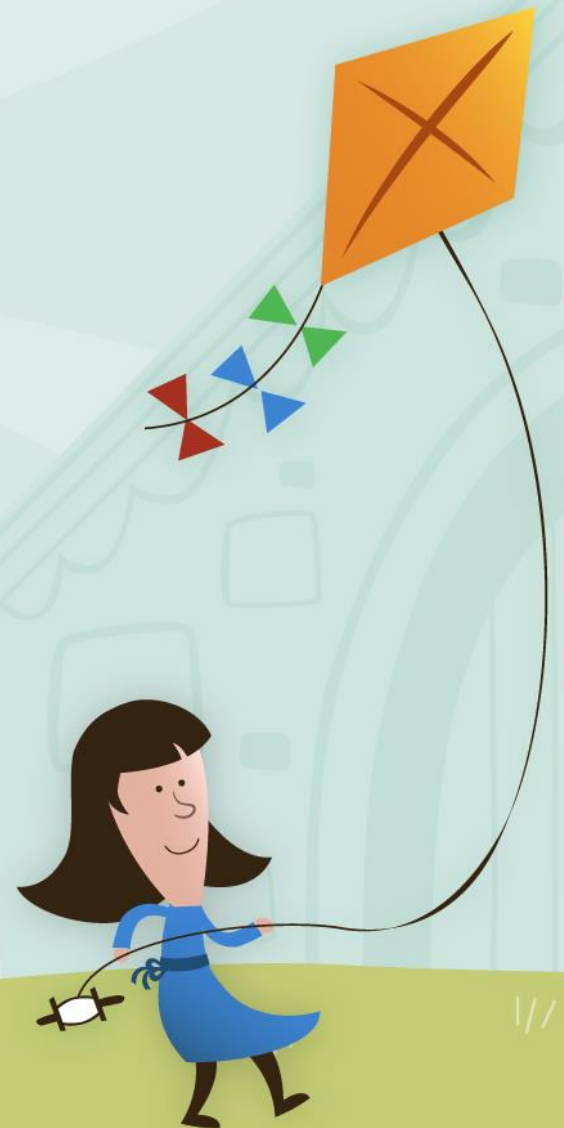
# Time to Win a Prize



# Math FSA

Grades 3rd–5th

Tuesday and Wednesday,  
May 10<sup>th</sup> and May 11<sup>th</sup>



# FSA Math

3-5<sup>th</sup> grade students take the assessment

All math FSA will be paper-based

2 sessions of 80 minutes

Approximately 64 questions total



# Multiple Choice

1. What is the value of the unknown number in the equation  $6 \times 3 = \square$  ?

(A) 3

(B) 9

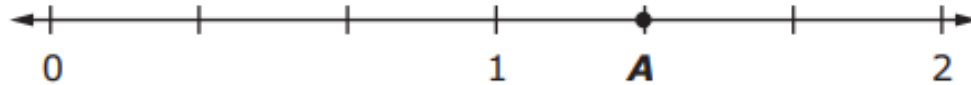
(C) 18

(D) 63



# Gridded Responses

2. What fraction is represented by point A on the number line shown?



|   |   |   |   |   |   |   |
|---|---|---|---|---|---|---|
|   |   |   |   |   |   |   |
|   | / | / | / | / | / |   |
| 0 | 0 | 0 | 0 | 0 | 0 | 0 |
| 1 | 1 | 1 | 1 | 1 | 1 | 1 |
| 2 | 2 | 2 | 2 | 2 | 2 | 2 |
| 3 | 3 | 3 | 3 | 3 | 3 | 3 |
| 4 | 4 | 4 | 4 | 4 | 4 | 4 |
| 5 | 5 | 5 | 5 | 5 | 5 | 5 |
| 6 | 6 | 6 | 6 | 6 | 6 | 6 |
| 7 | 7 | 7 | 7 | 7 | 7 | 7 |
| 8 | 8 | 8 | 8 | 8 | 8 | 8 |
| 9 | 9 | 9 | 9 | 9 | 9 | 9 |



Match each number to the value of the number rounded to the nearest 10

|     | 180 | 190 | 200 |
|-----|-----|-----|-----|
| 181 | (A) | (B) | (C) |
| 186 | (D) | (E) | (F) |
| 194 | (G) | (H) | (I) |

# Table Match



# Multi-Select

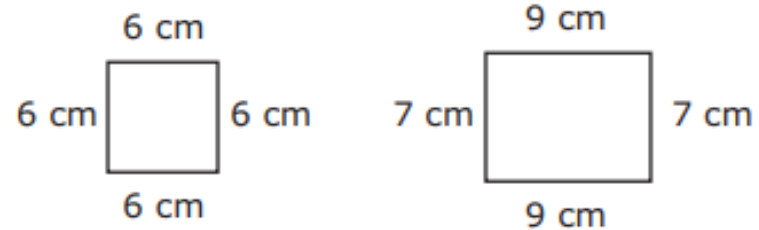
5. Select all the situations that can be represented by  $35 \div 5$ .

- Ⓐ Heidi has 35 apples after picking the same number of apples each day for 5 days.
- Ⓑ Heidi has 35 apples and places an equal number of apples into 5 baskets.
- Ⓒ Heidi has 5 apples and needs more apples to deliver to a customer.
- Ⓓ Heidi has 35 apples, and her friend gives her 5 more.
- Ⓔ Heidi has 35 apples and gives 5 of them to a friend.



# Editing Task Choice

9. The two figures shown are measured in centimeters (cm).



Complete the statement about the two figures. For each blank, fill in the circle **before** the word or phrase that is correct.

The shapes are both

- (A) squares
- (B) trapezoids
- (C) rectangles

because

- (A) all the angles in each shape are right angles.
- (B) all the sides of each shape have the same length.
- (C) all the sides of each shape are made of straight lines.





# During the test

4<sup>th</sup> and 5<sup>th</sup> grade students receive a reference sheet for conversion questions, 4<sup>th</sup> grade has area and perimeter formula

Students must show work within the testing booklet



## Grade 5 FSA Mathematics Reference Sheet

### Customary Conversions

1 foot = 12 inches  
1 yard = 3 feet  
1 mile = 5,280 feet  
1 mile = 1,760 yards

1 cup = 8 fluid ounces  
1 pint = 2 cups  
1 quart = 2 pints  
1 gallon = 4 quarts

1 pound = 16 ounces  
1 ton = 2,000 pounds

### Metric Conversions

1 meter = 100 centimeters  
1 meter = 1000 millimeters  
1 kilometer = 1000 meters

## Grade 4 FSA Mathematics Reference Sheet

### Customary Conversions

1 foot = 12 inches  
1 yard = 3 feet  
1 mile = 5,280 feet  
1 mile = 1,760 yards

1 cup = 8 fluid ounces  
1 pint = 2 cups  
1 quart = 2 pints  
1 gallon = 4 quarts

1 pound = 16 ounces  
1 ton = 2,000 pounds

### Metric Conversions

1 meter = 100 centimeters  
1 meter = 1000 millimeters  
1 kilometer = 1000 meters

1 liter = 1000 milliliters

1 gram = 1000 milligrams  
1 kilogram = 1000 grams

### Time Conversions

1 minute = 60 seconds  
1 hour = 60 minutes  
1 day = 24 hours  
1 year = 365 days  
1 year = 52 weeks

### Formulas

$$A = lw$$

$$P = 2l + 2w$$

# FSA Scores

| Level 1                                                                     | Level 2                                                                      | Level 3                                                         | Level 4                                          | Level 5                                              |
|-----------------------------------------------------------------------------|------------------------------------------------------------------------------|-----------------------------------------------------------------|--------------------------------------------------|------------------------------------------------------|
| Inadequate:<br>Highly likely to need substantial support for the next grade | Below Satisfactory:<br>Likely to need substantial support for the next grade | Satisfactory:<br>May need additional support for the next grade | Proficient:<br>Likely to excel in the next grade | Mastery:<br>Highly likely to excel in the next grade |



# How are we preparing at school:

- Students take cumulative monthly assessments; giving students practice with similar testing item types
- Teaching students a variety of efficient strategies to solve mathematical problems
- Designated times for small group instruction
- Providing feedback to students through independent conferencing
- Goal setting with celebrations

• Saturday Academy



# Resources To Use At Home



<http://fsassessments.org/students-and-families/practice-tests/>

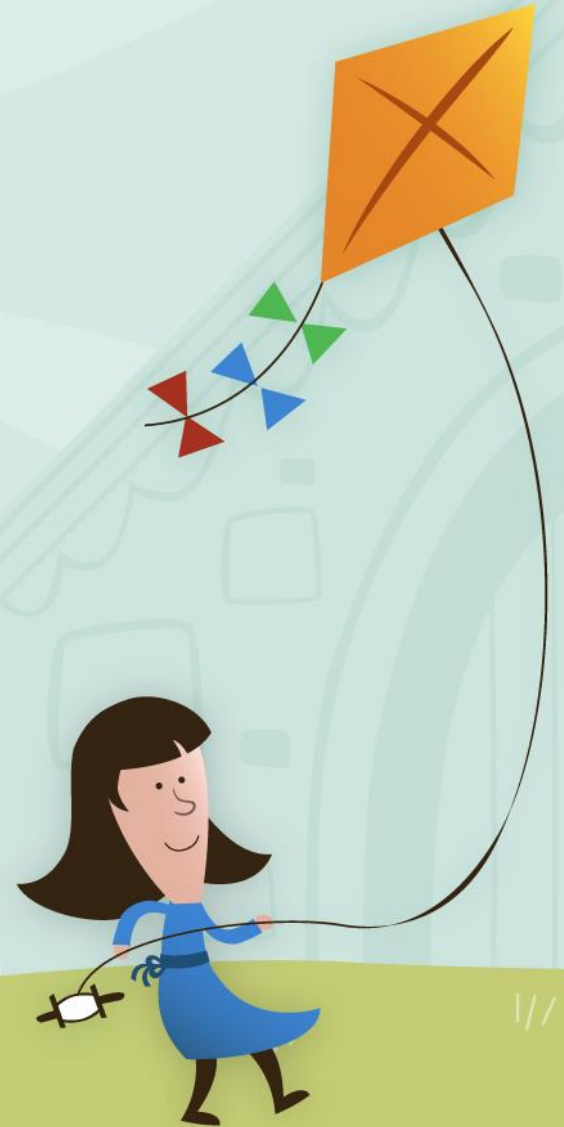


**Login.i-Ready.com**

Log in using student connection

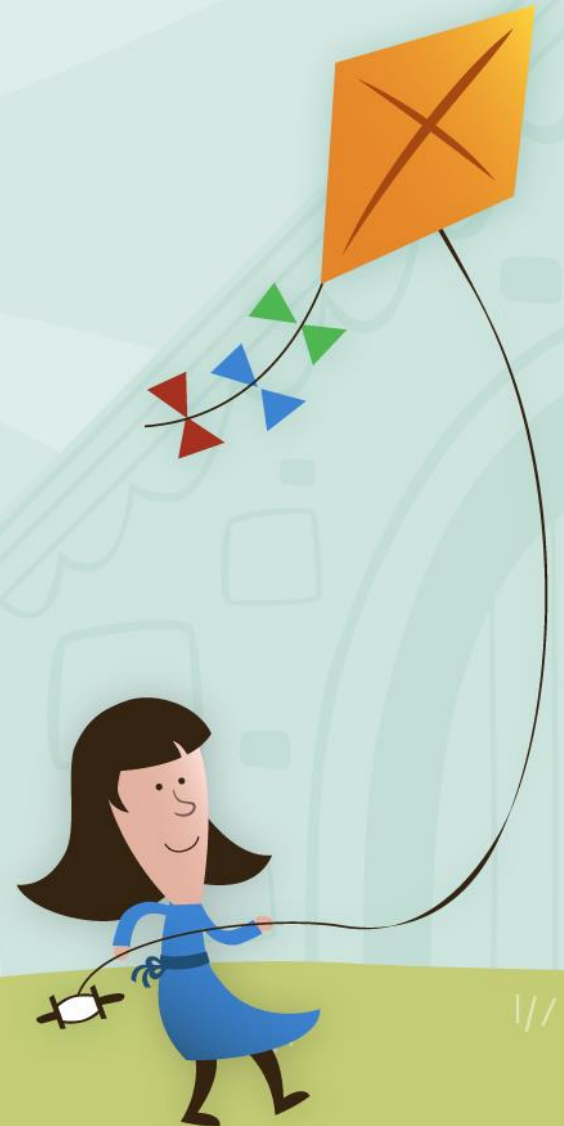


# Time to Win a Prize



# Statewide Science Assessment

5<sup>th</sup> Grade on Tuesday and  
Wednesday, May 17<sup>th</sup> and May 18<sup>th</sup>



# SSA

5th grade students take the assessment

Based on Science Content from K-5

2 sessions of 80 minutes

Approximately 67 questions total

Proficiency (at least 70%, Level 3 and up)



# Multiple Choice: Nature of Science

## 17%

A scientist set up containers to collect water in three spots around town. He wanted to find out how much rain falls in each area. What should the scientist record when looking at each container?

- A) The number of organisms present in each container.
- B) The amount of rainwater in each container.
- C) The color of the rainwater in each container.
- D) The temperature of the rainwater in each container.





# Multiple Choice: Physical Science

## 29%

Kyle and Jan are comparing two samples of matter. They make a table of the properties of each sample.

PROPERTIES OF SAMPLES

| Property             | Sample 1 | Sample 2 |
|----------------------|----------|----------|
| Color                | Red      | Silver   |
| Mass (grams)         | 30       | 5        |
| Shape                | Pyramid  | Cube     |
| Volume (milliliters) | 40       | 3        |

Which property provides the **best** evidence that both samples are solids rather than liquids?

- A) Color
- B) Mass
- C) Shape
- D) Volume



# Multiple Choice: Earth Science 29%

Earth moves around the Sun at more than 60,000 miles per hour. How long does it take Earth to go all the way around the Sun once?

A)1 day

B)7 days

C)29.5 days

D)365 days



# Multiple Choice: Life Science 25%

The skin is the largest organ in the human body. Which of the following is an important function of the skin?

- A) Producing bile to allow the body to absorb fats.
- B) Directing the body's activities.
- C) Preventing the body from using glucose.
- D) Protecting the body from bacteria.



# At School

- Long term investigations and STEM Fair Activities
- Daily Science and Content Literacy
- Technology embedded into STEM block through Penda, Blooket
- Practicing test taking



# Home Resources

- Game Play
  - Penda
  - Legends of Learning
  - Blooket
- Videos and Games
  - FloridaStudents.org
  - Floridascience.com



# Resources

- More information about the test can be found at <http://www.fldoe.org/accountability/assessments/k-12-student-assessment/science.shtml>
- Check out the great resources at <https://floridastudents.org/>



# Important Testing Dates

- FSA Reading 3<sup>rd</sup> Grade- April 5<sup>th</sup> and 6<sup>th</sup>
- FSA Writing 4<sup>th</sup> and 5<sup>th</sup> Grade- April 5<sup>th</sup>
- Iready 4<sup>th</sup> -5<sup>th</sup> Grade- week of April 11<sup>th</sup>
- Iready 3<sup>rd</sup> Grade- week of April 18<sup>th</sup>
- FSA Reading 4<sup>th</sup>- 5<sup>th</sup> Grade- May 4<sup>th</sup> and 5<sup>th</sup>
- FSA Math 3<sup>rd</sup>-5<sup>th</sup> Grade- May 10<sup>th</sup> and 11<sup>th</sup>
- SSA (Science)- 5<sup>th</sup> Grade- May 17<sup>th</sup> and May 18<sup>th</sup>
- EOY Science 3<sup>rd</sup> and 4<sup>th</sup> Grade- May 19<sup>th</sup> and May 20<sup>th</sup>



# QUESTION TIME

Please use  
you "raise  
hand" or type  
in the chat, if  
you have any  
questions.





# Time to Win a Prize

